

LEVEL 1

Stratum Lot
5

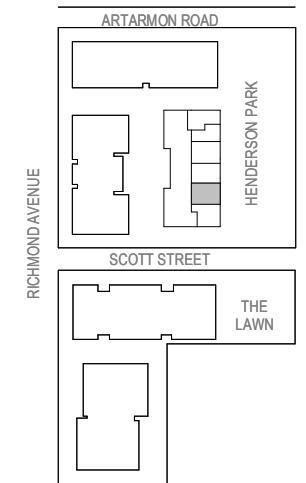
Strata Lot
5

Colour Scheme: Premium C
Floor Finish: Tiles

TWO BEDROOM APARTMENT

Unit Area 77 m²
Balcony Area 38 m²
Total Area 115 m²

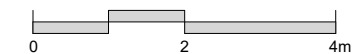
Areas subject to final survey. Area includes balcony, winter garden and courtyard where applicable. Area excludes associated parking and external storage areas.



Legend - As Applicable

- | | | |
|-------------------|------------------------------|------------|
| ▲ Access | F Fridge | J Joinery |
| △ Balcony Access | P Pantry | L Linen |
| ** Sliding Screen | O Wall Oven | St Storage |
| * Fixed Screen | Planting maintained by Owner | |

Provision of a water point, GPO (power point) and gas point has been made available to the balcony.



This floor plan was produced prior to construction and while the information contained herein is believed to be correct it is not guaranteed. Changes will undoubtedly be made in accordance with the contract for sale. The plan does not show additional features such as hot water systems, services, or Bulkheads necessary for services. Dimensions, areas, and scale of floor plans are approximate only and subject to the terms of the Contract. Areas calculated in accordance with the Strata Schemes Development Act 2015. The furniture and furnishings depicted are not included with any sale. Purchasers must refer to the contract for sale for the list of inclusions. Furnishings should not be taken to indicate the final position of power points, TV connection points and the like. All graphics, including design and extent of tile/paver/carpet areas, landscaping, balustrades, louvres, sun shading devices, privacy screens and services equipment are for illustrative purposes only and are not to be relied on as a representative of the final product. Plans do not show additional features within each lot such as letterboxes and side and rear retaining walls. All level changes in the courtyards may not have been shown.

Stratum Lot
5

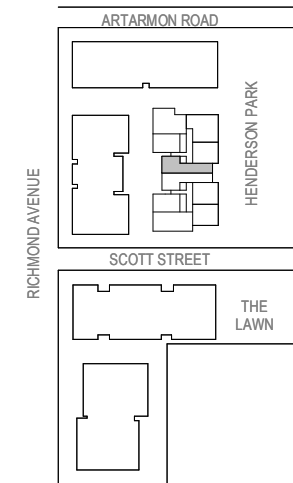
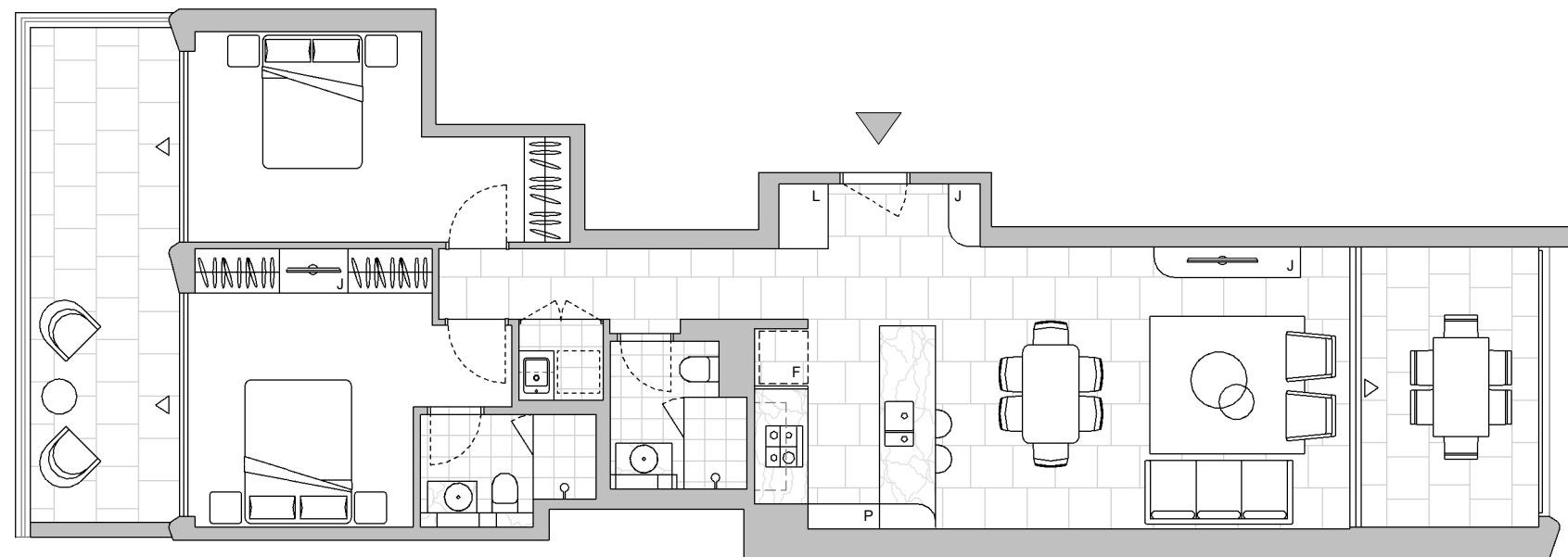
Strata Lot
11

Colour Scheme: Premium C
Floor Finish: Tiles

TWO BEDROOM APARTMENT

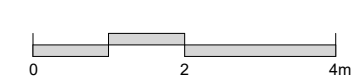
Unit Area 80 m²
Balcony Area 25 m²
Total Area 105 m²

Areas subject to final survey. Area includes balcony, winter garden and courtyard where applicable. Area excludes associated parking and external storage areas.



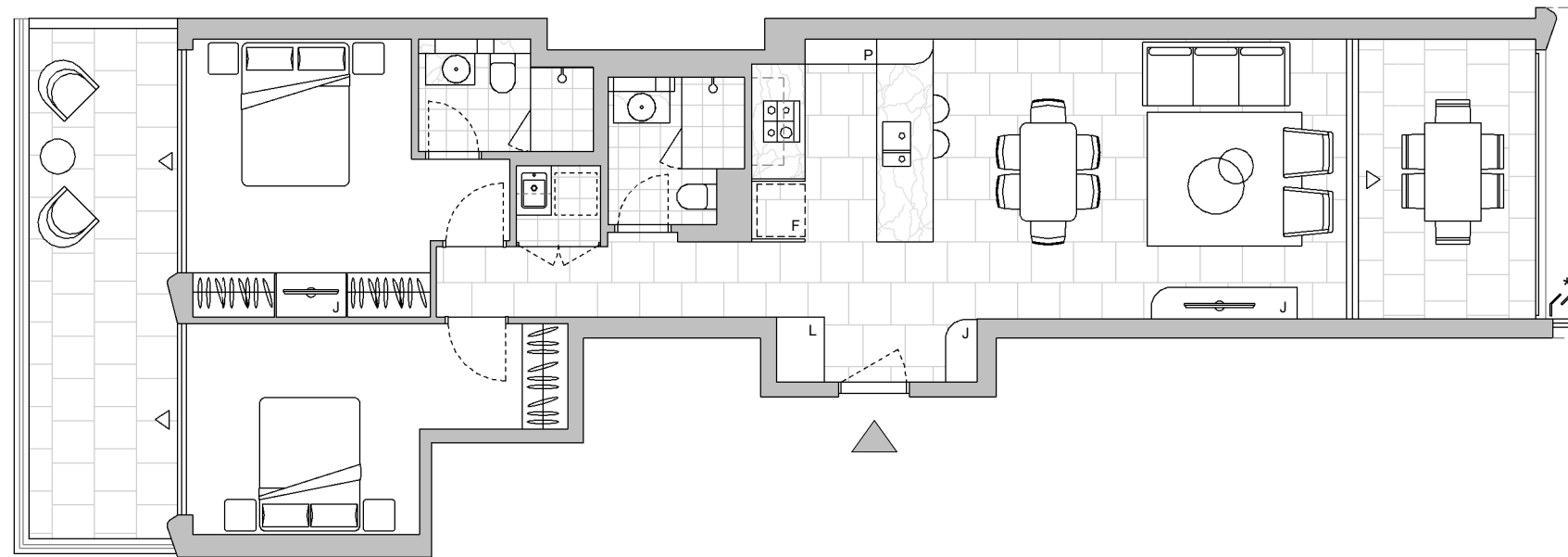
Legend - As Applicable

- | | | |
|-------------------|-------------|------------|
| ▲ Access | F Fridge | J Joinery |
| △ Balcony Access | P Pantry | L Linen |
| ** Sliding Screen | O Wall Oven | St Storage |
| * Fixed Screen | | |



LEVEL 2

This floor plan was produced prior to construction and while the information contained herein is believed to be correct it is not guaranteed. Changes will undoubtedly be made in accordance with the contract for sale. The plan does not show additional features such as hot water systems, services, or Bulkheads necessary for services. Dimensions, areas, and scale of floor plans are approximate only and subject to the terms of the Contract. Areas calculated in accordance with the Strata Schemes Development Act 2015. The furniture and furnishings depicted are not included with any sale. Purchasers must refer to the contract for sale for the list of inclusions. Furnishings should not be taken to indicate the final position of power points, TV connection points and the like. All graphics, including design and extent of tile/paver/carpet areas, landscaping, balustrades, louvres, sun shading devices, privacy screens and services equipment are for illustrative purposes only and are not to be relied on as a representative of the final product. Plans do not show additional features within each lot such as letterboxes and side and rear retaining walls. All level changes in the courtyards may not have been shown.



LEVEL 2

Stratum Lot
5

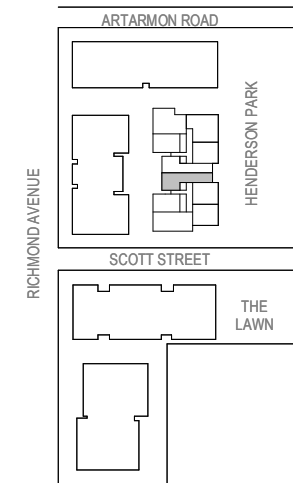
Strata Lot
12

Colour Scheme: Premium A
Floor Finish: Tiles

TWO BEDROOM APARTMENT

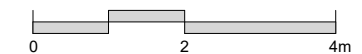
Unit Area 80 m²
Balcony Area 25 m²
Total Area 105 m²

Areas subject to final survey. Area includes balcony, winter garden and courtyard where applicable. Area excludes associated parking and external storage areas.



Legend - As Applicable

- | | | |
|-------------------|-------------|------------|
| ▲ Access | F Fridge | J Joinery |
| △ Balcony Access | P Pantry | L Linen |
| ** Sliding Screen | O Wall Oven | St Storage |
| * Fixed Screen | | |



This floor plan was produced prior to construction and while the information contained herein is believed to be correct it is not guaranteed. Changes will undoubtedly be made in accordance with the contract for sale. The plan does not show additional features such as hot water systems, services, or Bulkheads necessary for services. Dimensions, areas, and scale of floor plans are approximate only and subject to the terms of the Contract. Areas calculated in accordance with the Strata Schemes Development Act 2015. The furniture and furnishings depicted are not included with any sale. Purchasers must refer to the contract for sale for the list of inclusions. Furnishings should not be taken to indicate the final position of power points, TV connection points and the like. All graphics, including design and extent of tile/paver/carpet areas, landscaping, balustrades, louvres, sun shading devices, privacy screens and services equipment are for illustrative purposes only and are not to be relied on as a representative of the final product. Plans do not show additional features within each lot such as letterboxes and side and rear retaining walls. All level changes in the courtyards may not have been shown.

Stratum Lot
5

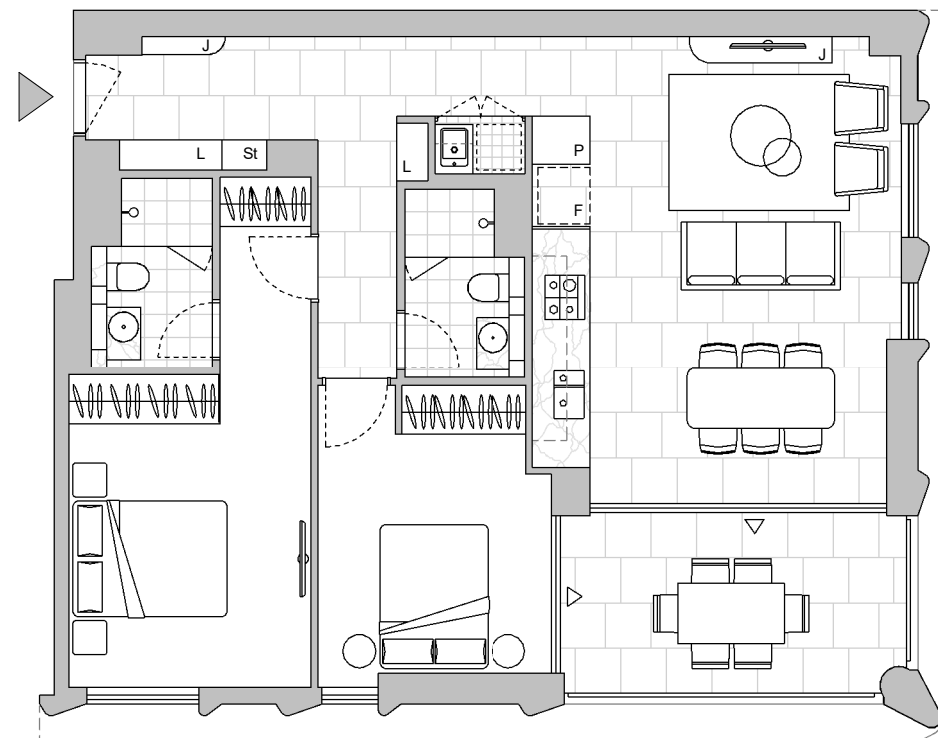
Strata Lot
14

Colour Scheme: Premium C
Floor Finish: Tiles

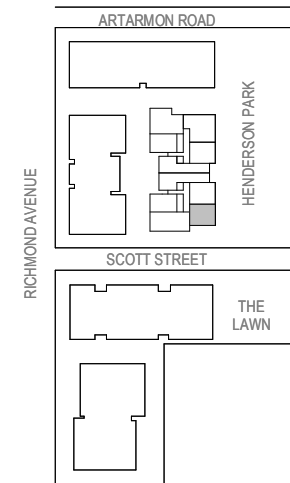
TWO BEDROOM APARTMENT

Unit Area 79 m²
Balcony Area 10 m²
Total Area 89 m²

Areas subject to final survey. Area includes balcony, winter garden and courtyard where applicable. Area excludes associated parking and external storage areas.

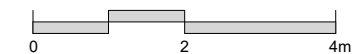


LEVEL 2

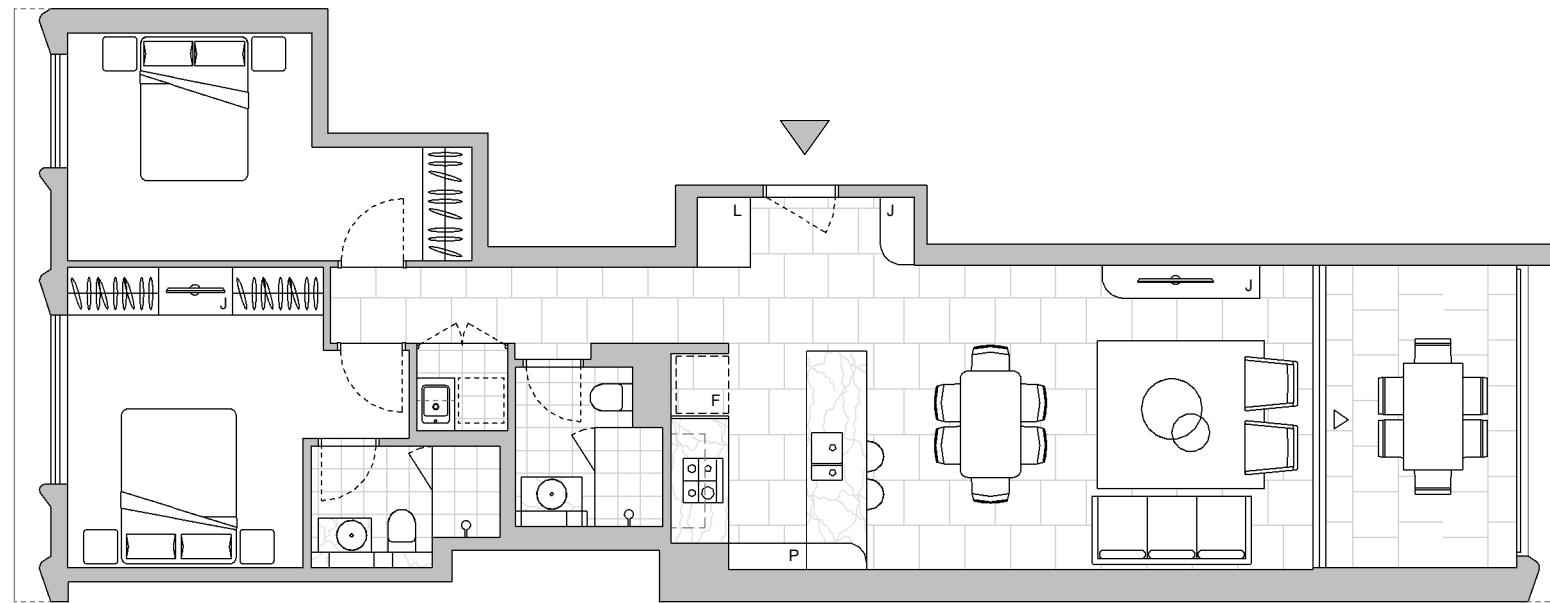


Legend - As Applicable

- | | | |
|-------------------|-------------|------------|
| ▲ Access | F Fridge | J Joinery |
| △ Balcony Access | P Pantry | L Linen |
| ** Sliding Screen | O Wall Oven | St Storage |
| * Fixed Screen | | |



This floor plan was produced prior to construction and while the information contained herein is believed to be correct it is not guaranteed. Changes will undoubtedly be made in accordance with the contract for sale. The plan does not show additional features such as hot water systems, services, or Bulkheads necessary for services. Dimensions, areas, and scale of floor plans are approximate only and subject to the terms of the Contract. Areas calculated in accordance with the Strata Schemes Development Act 2015. The furniture and furnishings depicted are not included with any sale. Purchasers must refer to the contract for sale for the list of inclusions. Furnishings should not be taken to indicate the final position of power points, TV connection points and the like. All graphics, including design and extent of tile/paver/carpet areas, landscaping, balustrades, louvres, sun shading devices, privacy screens and services equipment are for illustrative purposes only and are not to be relied on as a representative of the final product. Plans do not show additional features within each lot such as letterboxes and side and rear retaining walls. All level changes in the courtyards may not have been shown.



LEVEL 3

Stratum Lot
5

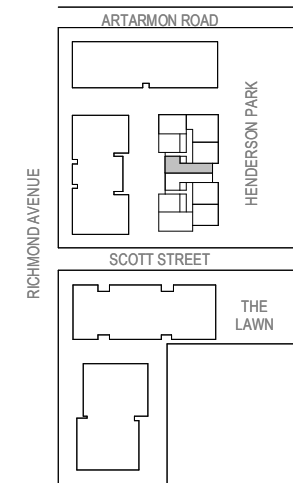
Strata Lot
20

Colour Scheme: Premium A
Floor Finish: Tiles

TWO BEDROOM APARTMENT

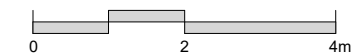
Unit Area 79 m²
Balcony Area 10 m²
Total Area 89 m²

Areas subject to final survey. Area includes balcony, winter garden and courtyard where applicable. Area excludes associated parking and external storage areas.



Legend - As Applicable

- | | | |
|-------------------|-------------|------------|
| ▲ Access | F Fridge | J Joinery |
| △ Balcony Access | P Pantry | L Linen |
| ** Sliding Screen | O Wall Oven | St Storage |
| * Fixed Screen | | |



This floor plan was produced prior to construction and while the information contained herein is believed to be correct it is not guaranteed. Changes will undoubtedly be made in accordance with the contract for sale. The plan does not show additional features such as hot water systems, services, or Bulkheads necessary for services. Dimensions, areas, and scale of floor plans are approximate only and subject to the terms of the Contract. Areas calculated in accordance with the Strata Schemes Development Act 2015. The furniture and furnishings depicted are not included with any sale. Purchasers must refer to the contract for sale for the list of inclusions. Furnishings should not be taken to indicate the final position of power points, TV connection points and the like. All graphics, including design and extent of tile/paver/carpet areas, landscaping, balustrades, louvres, sun shading devices, privacy screens and services equipment are for illustrative purposes only and are not to be relied on as a representative of the final product. Plans do not show additional features within each lot such as letterboxes and side and rear retaining walls. All level changes in the courtyards may not have been shown.

Stratum Lot
5

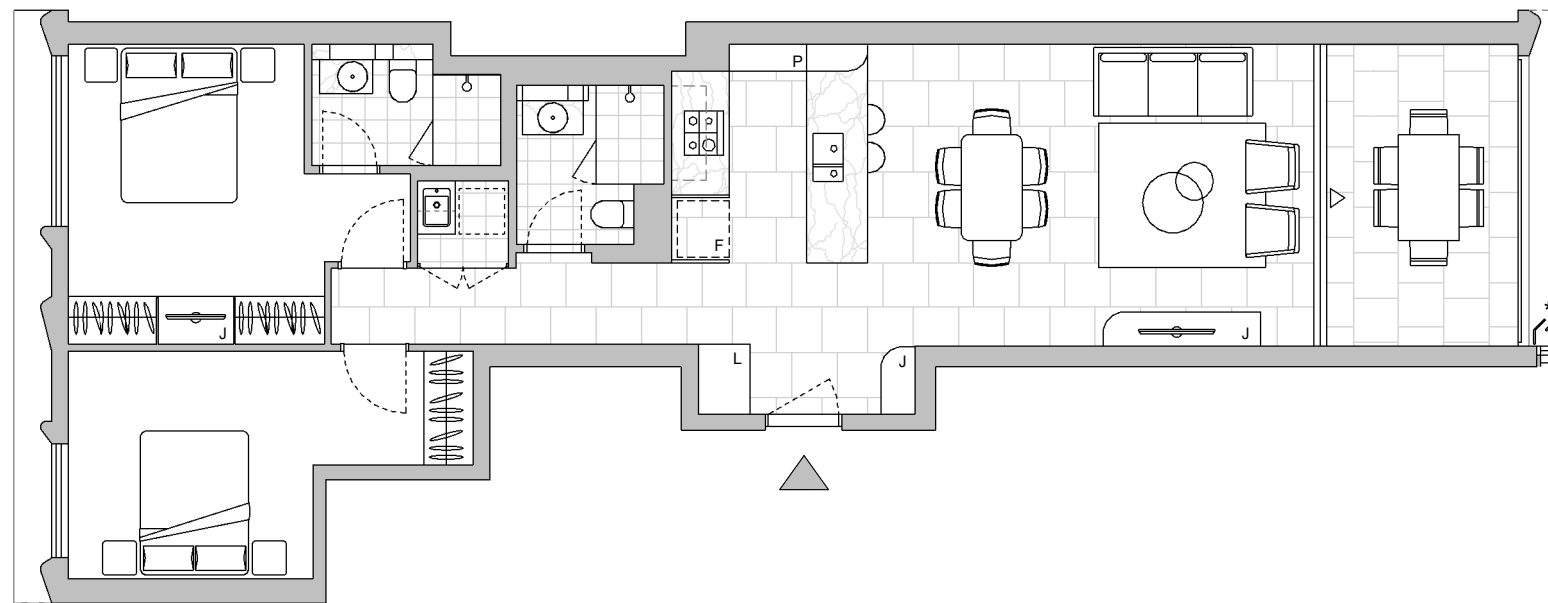
Strata Lot
21

Colour Scheme: Premium C
Floor Finish: Tiles

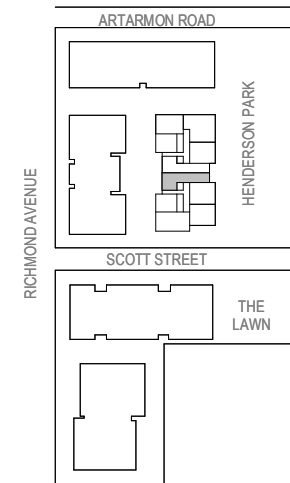
TWO BEDROOM APARTMENT

Unit Area 79 m²
Balcony Area 10 m²
Total Area 89 m²

Areas subject to final survey. Area includes balcony, winter garden and courtyard where applicable. Area excludes associated parking and external storage areas.

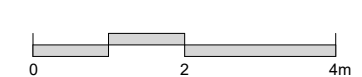


LEVEL 3



Legend - As Applicable

- | | | |
|-------------------|-------------|------------|
| ▲ Access | F Fridge | J Joinery |
| △ Balcony Access | P Pantry | L Linen |
| ** Sliding Screen | O Wall Oven | St Storage |
| * Fixed Screen | | |



This floor plan was produced prior to construction and while the information contained herein is believed to be correct it is not guaranteed. Changes will undoubtedly be made in accordance with the contract for sale. The plan does not show additional features such as hot water systems, services, or Bulkheads necessary for services. Dimensions, areas, and scale of floor plans are approximate only and subject to the terms of the Contract. Areas calculated in accordance with the Strata Schemes Development Act 2015. The furniture and furnishings depicted are not included with any sale. Purchasers must refer to the contract for sale for the list of inclusions. Furnishings should not be taken to indicate the final position of power points, TV connection points and the like. All graphics, including design and extent of tile/paver/carpet areas, landscaping, balustrades, louvres, sun shading devices, privacy screens and services equipment are for illustrative purposes only and are not to be relied on as a representative of the final product. Plans do not show additional features within each lot such as letterboxes and side and rear retaining walls. All level changes in the courtyards may not have been shown.

Stratum Lot
5

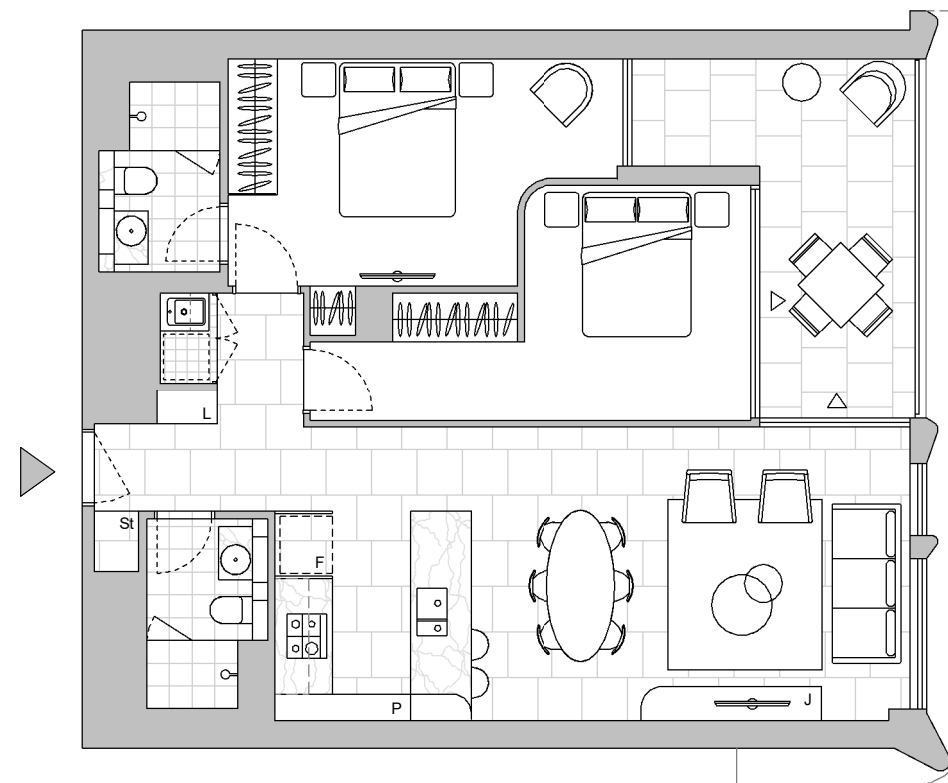
Strata Lot
29

Colour Scheme: Premium A
Floor Finish: Tiles

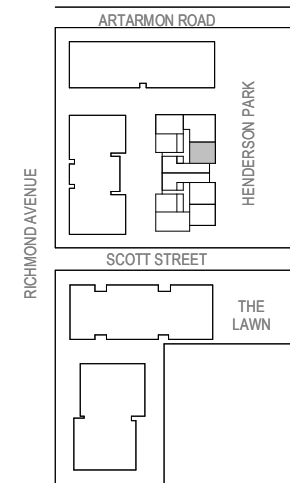
TWO BEDROOM APARTMENT

Unit Area 75 m²
Balcony Area 12 m²
Total Area 87 m²

Areas subject to final survey. Area includes balcony, winter garden and courtyard where applicable. Area excludes associated parking and external storage areas.

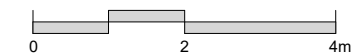


LEVEL 4



Legend - As Applicable

- | | | |
|-------------------|-------------|------------|
| ▲ Access | F Fridge | J Joinery |
| △ Balcony Access | P Pantry | L Linen |
| ** Sliding Screen | O Wall Oven | St Storage |
| * Fixed Screen | | |



This floor plan was produced prior to construction and while the information contained herein is believed to be correct it is not guaranteed. Changes will undoubtedly be made in accordance with the contract for sale. The plan does not show additional features such as hot water systems, services, or Bulkheads necessary for services. Dimensions, areas, and scale of floor plans are approximate only and subject to the terms of the Contract. Areas calculated in accordance with the Strata Schemes Development Act 2015. The furniture and furnishings depicted are not included with any sale. Purchasers must refer to the contract for sale for the list of inclusions. Furnishings should not be taken to indicate the final position of power points, TV connection points and the like. All graphics, including design and extent of tile/paver/carpet areas, landscaping, balustrades, louvres, sun shading devices, privacy screens and services equipment are for illustrative purposes only and are not to be relied on as a representative of the final product. Plans do not show additional features within each lot such as letterboxes and side and rear retaining walls. All level changes in the courtyards may not have been shown.

Stratum Lot
5

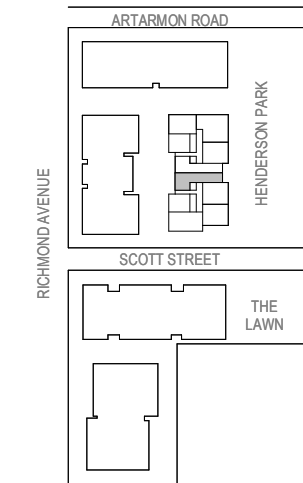
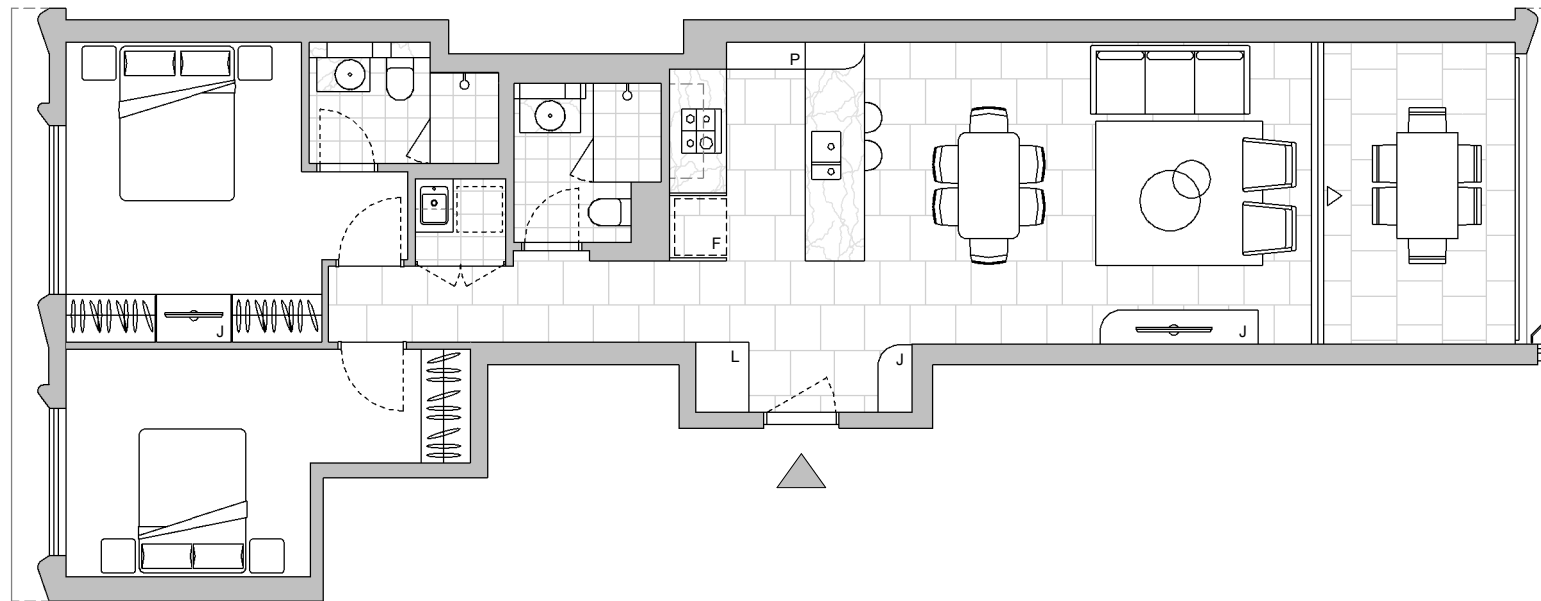
Strata Lot
31

Colour Scheme: Premium A
Floor Finish: Tiles

TWO BEDROOM APARTMENT

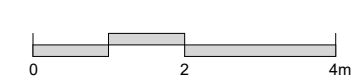
Unit Area 79 m²
Balcony Area 10 m²
Total Area 89 m²

Areas subject to final survey. Area includes balcony, winter garden and courtyard where applicable. Area excludes associated parking and external storage areas.



Legend - As Applicable

- | | | |
|-------------------|-------------|------------|
| ▲ Access | F Fridge | J Joinery |
| △ Balcony Access | P Pantry | L Linen |
| ** Sliding Screen | O Wall Oven | St Storage |
| * Fixed Screen | | |



LEVEL 4

This floor plan was produced prior to construction and while the information contained herein is believed to be correct it is not guaranteed. Changes will undoubtedly be made in accordance with the contract for sale. The plan does not show additional features such as hot water systems, services, or Bulkheads necessary for services. Dimensions, areas, and scale of floor plans are approximate only and subject to the terms of the Contract. Areas calculated in accordance with the Strata Schemes Development Act 2015. The furniture and furnishings depicted are not included with any sale. Purchasers must refer to the contract for sale for the list of inclusions. Furnishings should not be taken to indicate the final position of power points, TV connection points and the like. All graphics, including design and extent of tile/paver/carpet areas, landscaping, balustrades, louvres, sun shading devices, privacy screens and services equipment are for illustrative purposes only and are not to be relied on as a representative of the final product. Plans do not show additional features within each lot such as letterboxes and side and rear retaining walls. All level changes in the courtyards may not have been shown.

Stratum Lot
5

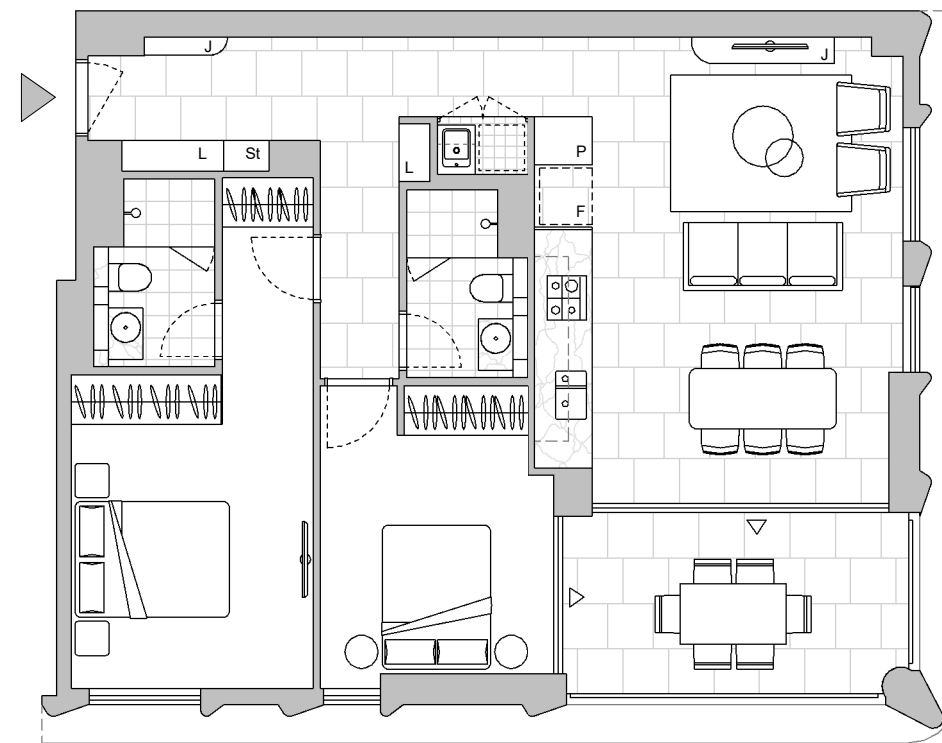
Strata Lot
33

Colour Scheme: Premium A
Floor Finish: Tiles

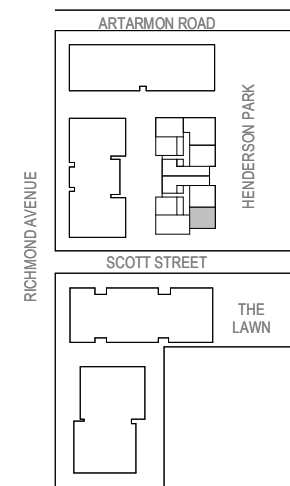
TWO BEDROOM APARTMENT

Unit Area 80 m²
Balcony Area 10 m²
Total Area 90 m²

Areas subject to final survey. Area includes balcony, winter garden and courtyard where applicable. Area excludes associated parking and external storage areas.

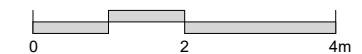


LEVEL 4



Legend - As Applicable

- | | | |
|-------------------|-------------|------------|
| ▲ Access | F Fridge | J Joinery |
| △ Balcony Access | P Pantry | L Linen |
| ** Sliding Screen | O Wall Oven | St Storage |
| * Fixed Screen | | |



This floor plan was produced prior to construction and while the information contained herein is believed to be correct it is not guaranteed. Changes will undoubtedly be made in accordance with the contract for sale. The plan does not show additional features such as hot water systems, services, or Bulkheads necessary for services. Dimensions, areas, and scale of floor plans are approximate only and subject to the terms of the Contract. Areas calculated in accordance with the Strata Schemes Development Act 2015. The furniture and furnishings depicted are not included with any sale. Purchasers must refer to the contract for sale for the list of inclusions. Furnishings should not be taken to indicate the final position of power points, TV connection points and the like. All graphics, including design and extent of tile/paver/carpet areas, landscaping, balustrades, louvres, sun shading devices, privacy screens and services equipment are for illustrative purposes only and are not to be relied on as a representative of the final product. Plans do not show additional features within each lot such as letterboxes and side and rear retaining walls. All level changes in the courtyards may not have been shown.

Stratum Lot
5

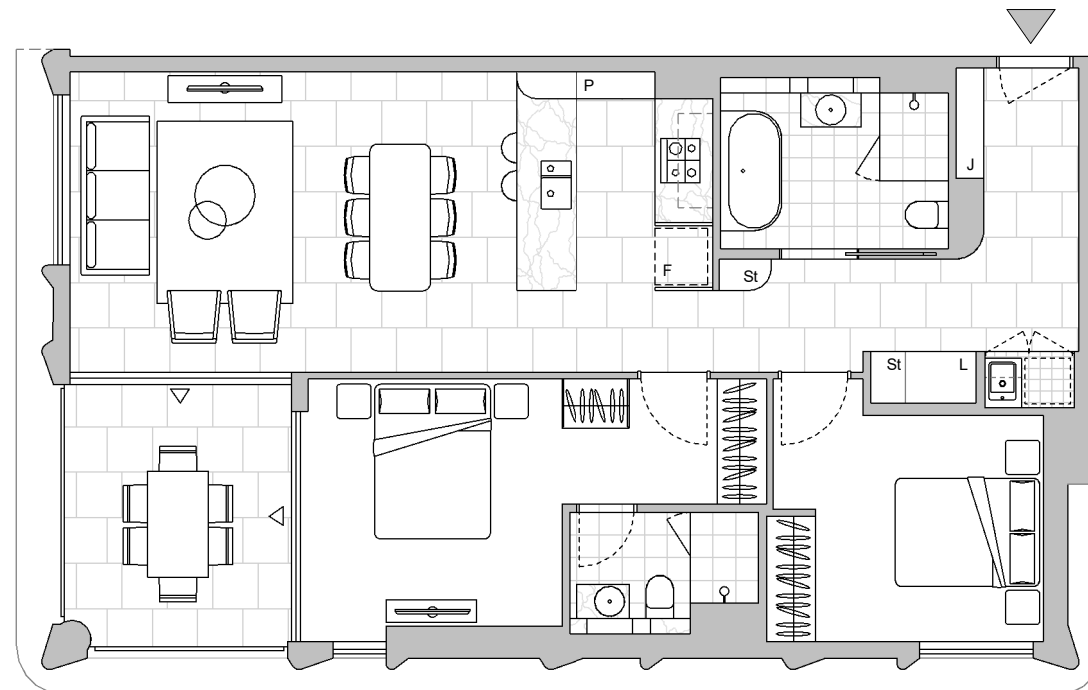
Strata Lot
34

Colour Scheme: Premium A
Floor Finish: Tiles

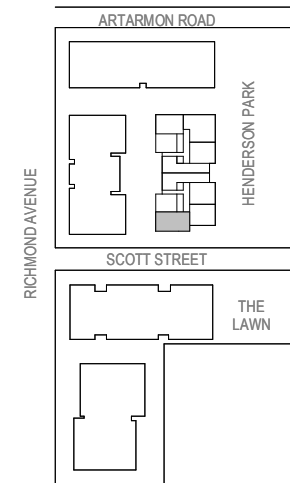
TWO BEDROOM APARTMENT

Unit Area 86 m²
Balcony Area 10 m²
Total Area 96 m²

Areas subject to final survey. Area includes balcony, winter garden and courtyard where applicable. Area excludes associated parking and external storage areas.

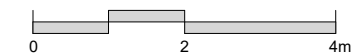


LEVEL 4

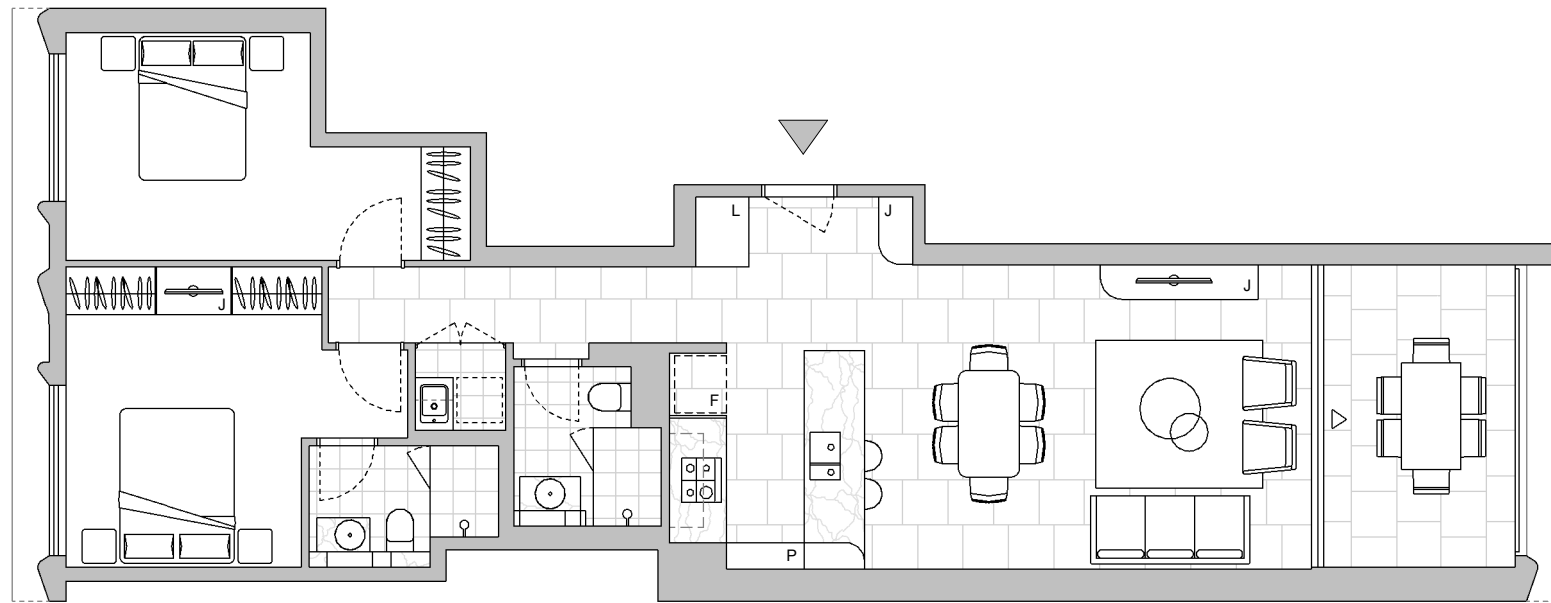


Legend - As Applicable

- | | | |
|-------------------|-------------|------------|
| ▲ Access | F Fridge | J Joinery |
| △ Balcony Access | P Pantry | L Linen |
| ** Sliding Screen | O Wall Oven | St Storage |
| * Fixed Screen | | |



This floor plan was produced prior to construction and while the information contained herein is believed to be correct it is not guaranteed. Changes will undoubtedly be made in accordance with the contract for sale. The plan does not show additional features such as hot water systems, services, or Bulkheads necessary for services. Dimensions, areas, and scale of floor plans are approximate only and subject to the terms of the Contract. Areas calculated in accordance with the Strata Schemes Development Act 2015. The furniture and furnishings depicted are not included with any sale. Purchasers must refer to the contract for sale for the list of inclusions. Furnishings should not be taken to indicate the final position of power points, TV connection points and the like. All graphics, including design and extent of tile/paver/carpet areas, landscaping, balustrades, louvres, sun shading devices, privacy screens and services equipment are for illustrative purposes only and are not to be relied on as a representative of the final product. Plans do not show additional features within each lot such as letterboxes and side and rear retaining walls. All level changes in the courtyards may not have been shown.



LEVEL 5

Stratum Lot
5

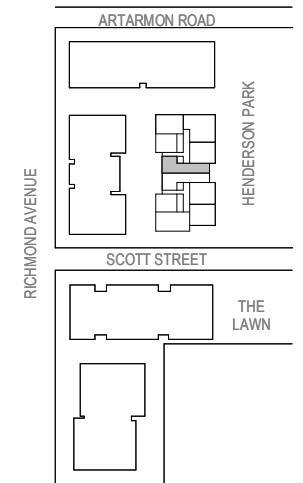
Strata Lot
40

Colour Scheme: Premium A
Floor Finish: Tiles

TWO BEDROOM APARTMENT

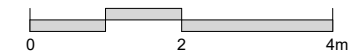
Unit Area 79 m²
Balcony Area 10 m²
Total Area 89 m²

Areas subject to final survey. Area includes balcony, winter garden and courtyard where applicable. Area excludes associated parking and external storage areas.

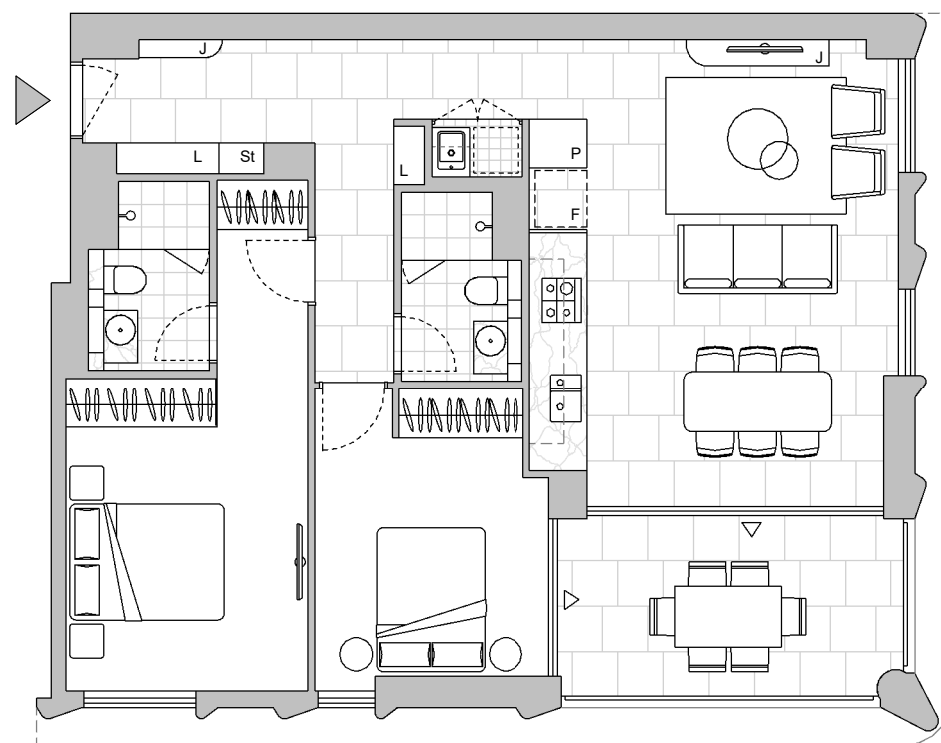


Legend - As Applicable

- | | | |
|-------------------|-------------|------------|
| ▲ Access | F Fridge | J Joinery |
| △ Balcony Access | P Pantry | L Linen |
| ** Sliding Screen | O Wall Oven | St Storage |
| * Fixed Screen | | |



This floor plan was produced prior to construction and while the information contained herein is believed to be correct it is not guaranteed. Changes will undoubtedly be made in accordance with the contract for sale. The plan does not show additional features such as hot water systems, services, or Bulkheads necessary for services. Dimensions, areas, and scale of floor plans are approximate only and subject to the terms of the Contract. Areas calculated in accordance with the Strata Schemes Development Act 2015. The furniture and furnishings depicted are not included with any sale. Purchasers must refer to the contract for sale for the list of inclusions. Furnishings should not be taken to indicate the final position of power points, TV connection points and the like. All graphics, including design and extent of tile/paver/carpet areas, landscaping, balustrades, louvres, sun shading devices, privacy screens and services equipment are for illustrative purposes only and are not to be relied on as a representative of the final product. Plans do not show additional features within each lot such as letterboxes and side and rear retaining walls. All level changes in the courtyards may not have been shown.



LEVEL 5

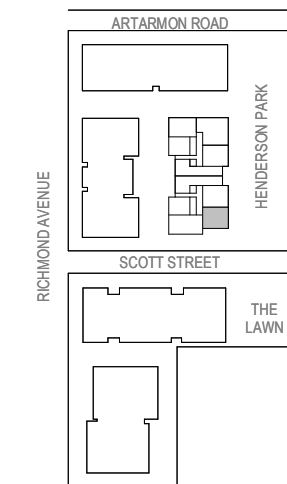
Stratum Lot
5

Strata Lot
43

TWO BEDROOM APARTMENT

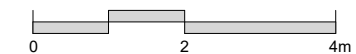
Unit Area 80 m²
 Balcony Area 10 m²
 Total Area 90 m²

Areas subject to final survey. Area includes balcony, winter garden and courtyard where applicable. Area excludes associated parking and external storage areas.

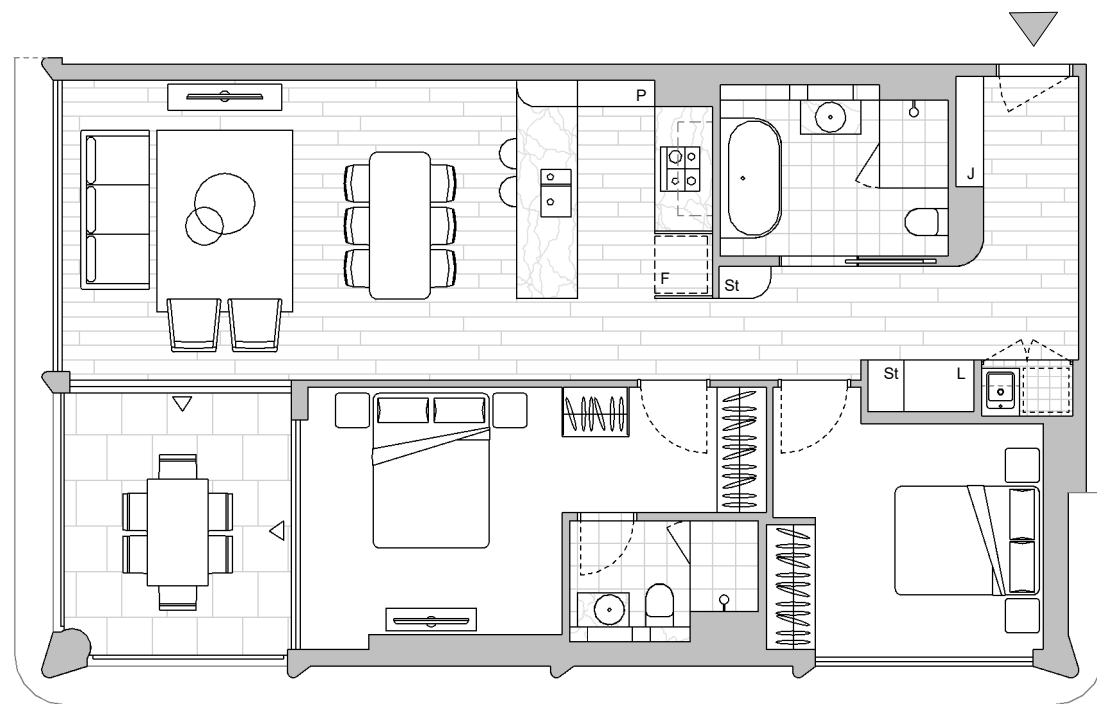


Legend - As Applicable

- | | | |
|-------------------|-------------|------------|
| ▲ Access | F Fridge | J Joinery |
| △ Balcony Access | P Pantry | L Linen |
| ** Sliding Screen | O Wall Oven | St Storage |
| * Fixed Screen | | |



This floor plan was produced prior to construction and while the information contained herein is believed to be correct it is not guaranteed. Changes will undoubtedly be made in accordance with the contract for sale. The plan does not show additional features such as hot water systems, services, or Bulkheads necessary for services. Dimensions, areas, and scale of floor plans are approximate only and subject to the terms of the Contract. Areas calculated in accordance with the Strata Schemes Development Act 2015. The furniture and furnishings depicted are not included with any sale. Purchasers must refer to the contract for sale for the list of inclusions. Furnishings should not be taken to indicate the final position of power points, TV connection points and the like. All graphics, including design and extent of tile/paver/carpet areas, landscaping, balustrades, louvres, sun shading devices, privacy screens and services equipment are for illustrative purposes only and are not to be relied on as a representative of the final product. Plans do not show additional features within each lot such as letterboxes and side and rear retaining walls. All level changes in the courtyards may not have been shown.



LEVEL 6

Stratum Lot
5

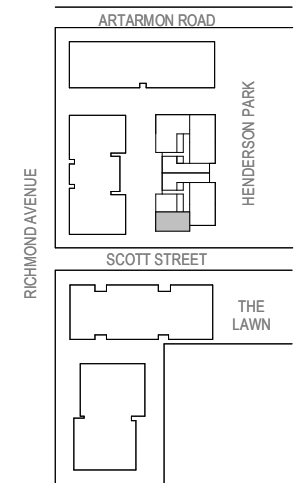
Strata Lot
51

Colour Scheme: Premium A
Floor Finish: Timber

TWO BEDROOM APARTMENT

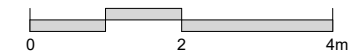
Unit Area 86 m²
Balcony Area 10 m²
Total Area 96 m²

Areas subject to final survey. Area includes balcony, winter garden and courtyard where applicable. Area excludes associated parking and external storage areas.

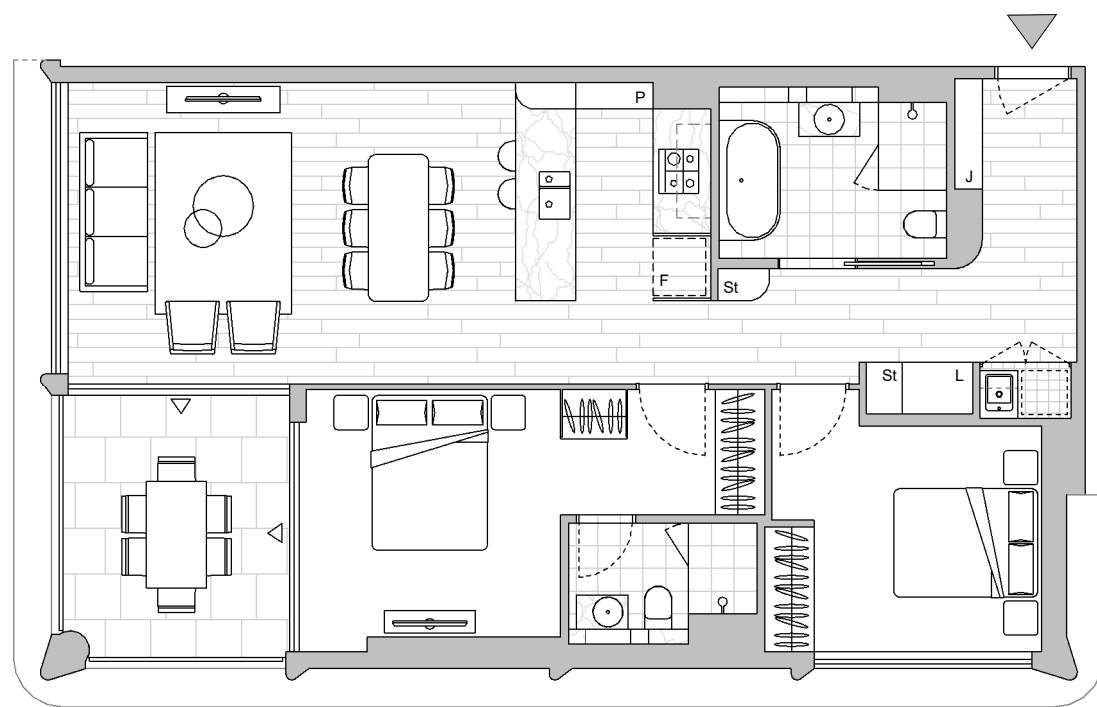


Legend - As Applicable

- | | | |
|-------------------|-------------|------------|
| ▲ Access | F Fridge | J Joinery |
| △ Balcony Access | P Pantry | L Linen |
| ** Sliding Screen | O Wall Oven | St Storage |
| * Fixed Screen | | |



This floor plan was produced prior to construction and while the information contained herein is believed to be correct it is not guaranteed. Changes will undoubtedly be made in accordance with the contract for sale. The plan does not show additional features such as hot water systems, services, or Bulkheads necessary for services. Dimensions, areas, and scale of floor plans are approximate only and subject to the terms of the Contract. Areas calculated in accordance with the Strata Schemes Development Act 2015. The furniture and furnishings depicted are not included with any sale. Purchasers must refer to the contract for sale for the list of inclusions. Furnishings should not be taken to indicate the final position of power points, TV connection points and the like. All graphics, including design and extent of tile/paver/carpet areas, landscaping, balustrades, louvres, sun shading devices, privacy screens and services equipment are for illustrative purposes only and are not to be relied on as a representative of the final product. Plans do not show additional features within each lot such as letterboxes and side and rear retaining walls. All level changes in the courtyards may not have been shown.



LEVEL 7

Stratum Lot
5

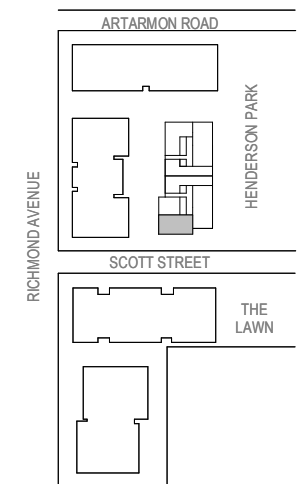
Strata Lot
58

Colour Scheme: Premium C
Floor Finish: Timber

TWO BEDROOM APARTMENT

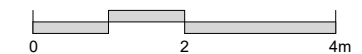
Unit Area 86 m²
Balcony Area 10 m²
Total Area 96 m²

Areas subject to final survey. Area includes balcony, winter garden and courtyard where applicable. Area excludes associated parking and external storage areas.

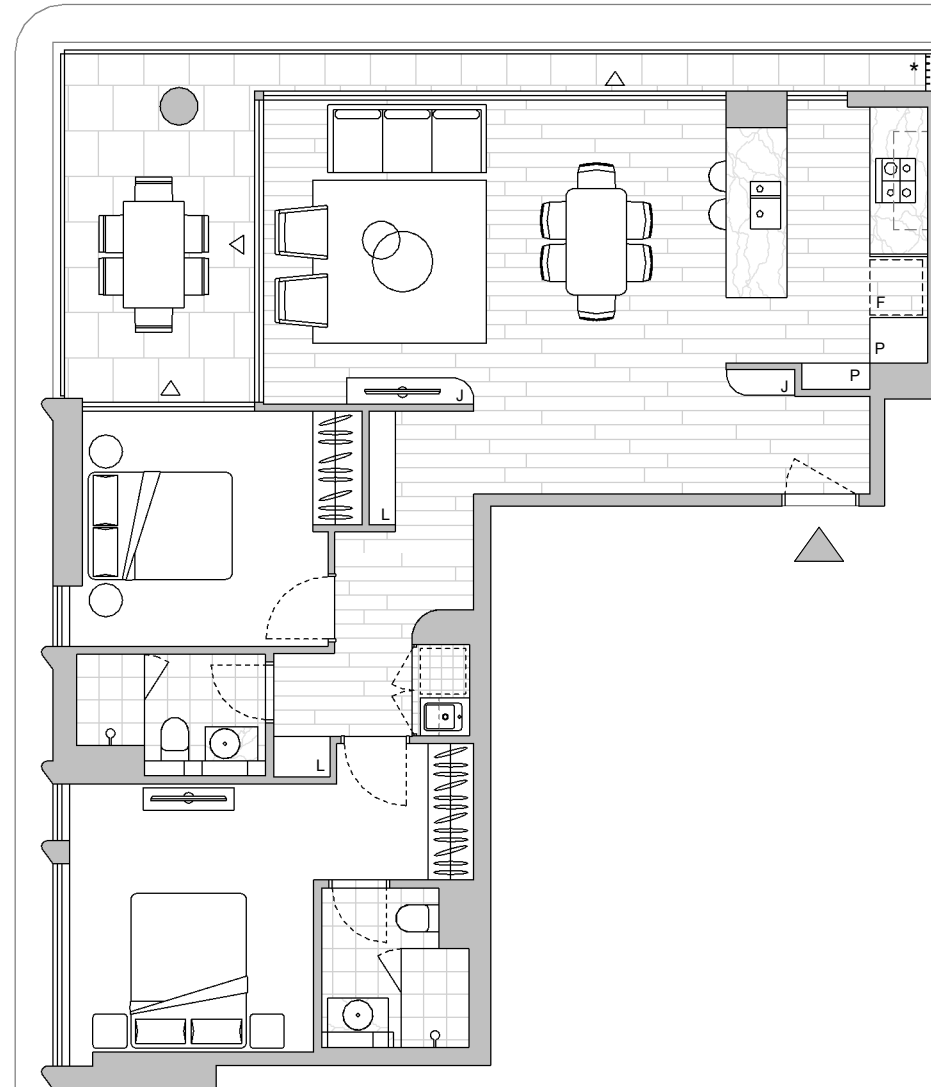


Legend - As Applicable

- | | | |
|-------------------|-------------|------------|
| ▲ Access | F Fridge | J Joinery |
| △ Balcony Access | P Pantry | L Linen |
| ** Sliding Screen | O Wall Oven | St Storage |
| * Fixed Screen | | |



This floor plan was produced prior to construction and while the information contained herein is believed to be correct it is not guaranteed. Changes will undoubtedly be made in accordance with the contract for sale. The plan does not show additional features such as hot water systems, services, or Bulkheads necessary for services. Dimensions, areas, and scale of floor plans are approximate only and subject to the terms of the Contract. Areas calculated in accordance with the Strata Schemes Development Act 2015. The furniture and furnishings depicted are not included with any sale. Purchasers must refer to the contract for sale for the list of inclusions. Furnishings should not be taken to indicate the final position of power points, TV connection points and the like. All graphics, including design and extent of tile/paver/carpet areas, landscaping, balustrades, louvres, sun shading devices, privacy screens and services equipment are for illustrative purposes only and are not to be relied on as a representative of the final product. Plans do not show additional features within each lot such as letterboxes and side and rear retaining walls. All level changes in the courtyards may not have been shown.



LEVEL 8

Stratum Lot
5

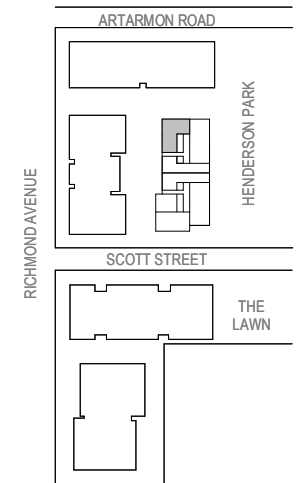
Strata Lot
60

Colour Scheme: Premium C
Floor Finish: Timber

TWO BEDROOM APARTMENT

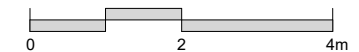
Unit Area 84 m²
Balcony Area 15 m²
Total Area 99 m²

Areas subject to final survey. Area includes balcony, winter garden and courtyard where applicable. Area excludes associated parking and external storage areas.



Legend - As Applicable

- | | | |
|-------------------|-------------|------------|
| ▲ Access | F Fridge | J Joinery |
| △ Balcony Access | P Pantry | L Linen |
| ** Sliding Screen | O Wall Oven | St Storage |
| * Fixed Screen | | |



This floor plan was produced prior to construction and while the information contained herein is believed to be correct it is not guaranteed. Changes will undoubtedly be made in accordance with the contract for sale. The plan does not show additional features such as hot water systems, services, or Bulkheads necessary for services. Dimensions, areas, and scale of floor plans are approximate only and subject to the terms of the Contract. Areas calculated in accordance with the Strata Schemes Development Act 2015. The furniture and furnishings depicted are not included with any sale. Purchasers must refer to the contract for sale for the list of inclusions. Furnishings should not be taken to indicate the final position of power points, TV connection points and the like. All graphics, including design and extent of tile/paver/carpet areas, landscaping, balustrades, louvres, sun shading devices, privacy screens and services equipment are for illustrative purposes only and are not to be relied on as a representative of the final product. Plans do not show additional features within each lot such as letterboxes and side and rear retaining walls. All level changes in the courtyards may not have been shown.

Stratum Lot
5

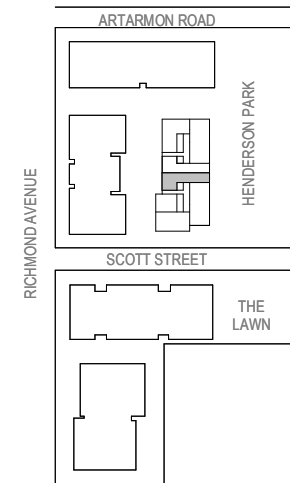
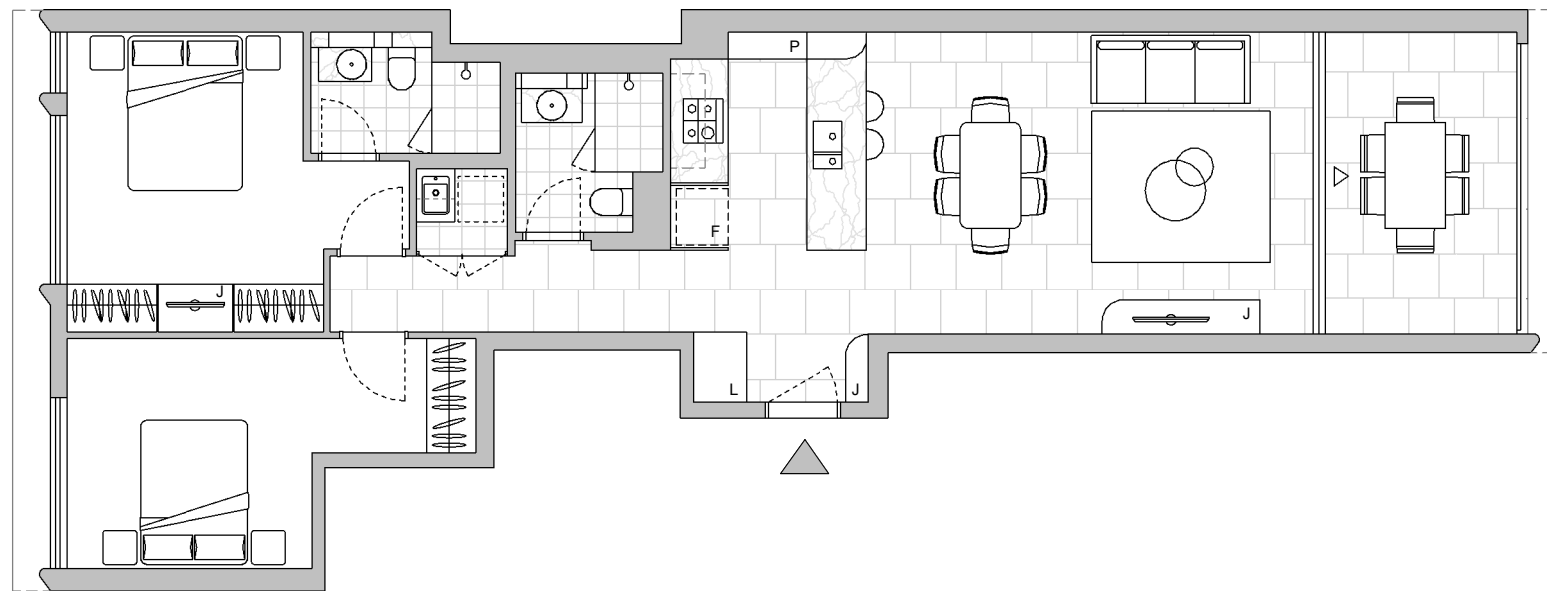
Strata Lot
63

Colour Scheme: Premium A
Floor Finish: Tiles

TWO BEDROOM APARTMENT

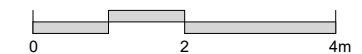
Unit Area 79 m²
Balcony Area 10 m²
Total Area 89 m²

Areas subject to final survey. Area includes balcony, winter garden and courtyard where applicable. Area excludes associated parking and external storage areas.



Legend - As Applicable

- | | | |
|-------------------|-------------|------------|
| ▲ Access | F Fridge | J Joinery |
| △ Balcony Access | P Pantry | L Linen |
| ** Sliding Screen | O Wall Oven | St Storage |
| * Fixed Screen | | |



LEVEL 8

This floor plan was produced prior to construction and while the information contained herein is believed to be correct it is not guaranteed. Changes will undoubtedly be made in accordance with the contract for sale. The plan does not show additional features such as hot water systems, services, or Bulkheads necessary for services. Dimensions, areas, and scale of floor plans are approximate only and subject to the terms of the Contract. Areas calculated in accordance with the Strata Schemes Development Act 2015. The furniture and furnishings depicted are not included with any sale. Purchasers must refer to the contract for sale for the list of inclusions. Furnishings should not be taken to indicate the final position of power points, TV connection points and the like. All graphics, including design and extent of tile/paver/carpet areas, landscaping, balustrades, louvres, sun shading devices, privacy screens and services equipment are for illustrative purposes only and are not to be relied on as a representative of the final product. Plans do not show additional features within each lot such as letterboxes and side and rear retaining walls. All level changes in the courtyards may not have been shown.